

The Jambo Registry
www.82jambo.com

1982 Jeep

**CJ-5/CJ-7 • Scrambler
Pickup • Cherokee
Wagoneer**





World headquarters for Jeep Corporation is at the American Center Building, home of American Motors Corporation, in Southfield, Michigan.

Who In The World Knows More About Four Wheel Drive Than Jeep?

A few years back we were saying, "Jeep wrote the book on four wheel drive". Well, in 1981 the saga continues even though we've retired that theme.

Around the world, in the most impossible places, Jeep® continues to be the first name in four wheeling for performance, reliability and durability.

It began more than four decades ago with an ingenious quarter-ton reconnaissance unit developed for the military. American GIs affectionately named the unique 4x4 vehicle "Jeep" after a popular comic strip character with extraordinary powers. The name was immortalized forever after the gutsy little personnel and material carrier crawled, clawed, slushed, inched and winched its way across Western Europe and over strategic Pacific Isles during World War II.



1945 Military Model MB

After the war, special equipment was adapted to civilian Jeep vehicles to help the Nation and the world get going and growing. The remarkable predecessor of today's Jeep CJ models went to work in agriculture, conservation, road building, forestry...wherever it was needed, anywhere on the globe.

Then came Jeep CJ-5! The legend! The original! Patriarch of an entire family of rugged, dependable 4WD vehicles produced by Jeep Corporation, a wholly owned subsidiary of American Motors Corporation.

We've learned a lot in bringing you more than 4 million Jeep vehicles over the last 42 years.

We've learned how to make drivelines tough enough and powerful enough to take the rigors of off-road use, while developing and utilizing stronger, lighter materials to help improve fuel economy.*

We've discovered ways to be contemporary with bright interior and exterior appearance packages, tastefully blended with that classic design that makes Jeep vehicles so recognizable, so distinctive the world over.

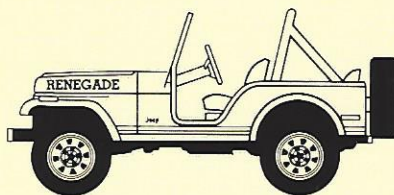
We've developed ingenious ways to make Jeep vehicles roomier, quieter, more comfortable and convenient, without ever forgetting Jeep's rugged utilitarian origin, or sacrificing its solid reputation for performance.



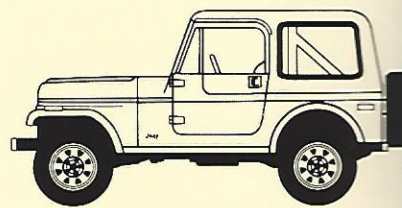
1982 CJ-7 Limited

For 1982 we're happy to present the finest Jeep vehicles ever. Jeep is America's only family of 4WD vehicles, and there is something in the line for every driver. The following pages provide all the information you need to determine which Jeep vehicle is right for you...CJ-5 or CJ-7, Scrambler, Cherokee, Wagoneer, or Pickup. Make your pick, then see your friendly Jeep 4WD specialist for a test drive. Discover that special feeling reserved only for those who drive a legend...one of the remarkable, incomparable Jeep vehicles.

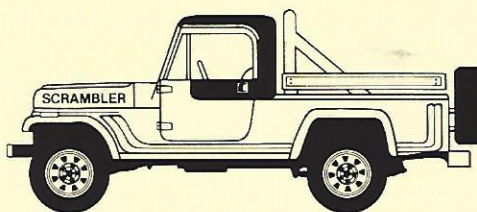
Jeep Model Lineup



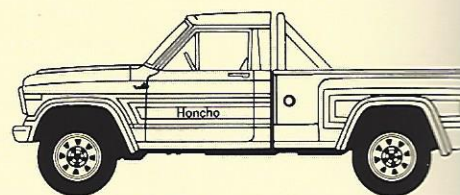
CJ-5 Renegade



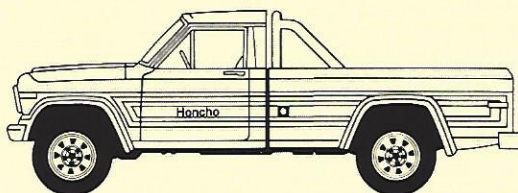
CJ-7 Limited



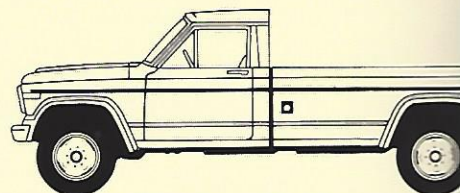
Scrambler SR Sport



J-10 Honcho Sportside



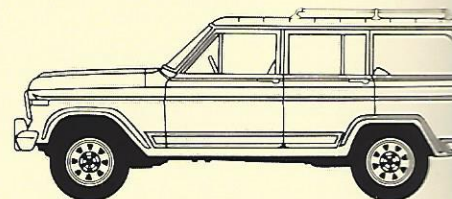
J-10 Honcho Townside



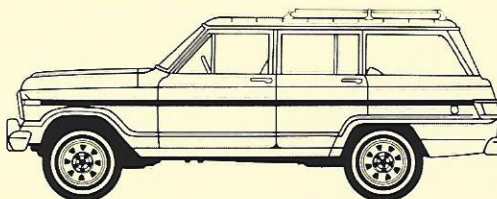
J-20 Townside Custom



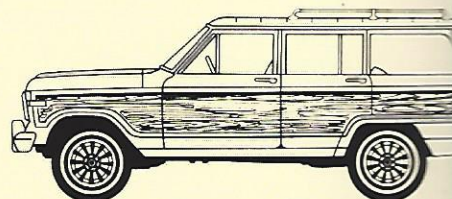
Cherokee Chief 2-Door



Cherokee Laredo 4-Door



Wagoneer Brougham



Wagoneer Limited

*See EPA estimates for Jeep vehicles in Technical Data section.

Jeep CJ...a breed apart

We put our first CJ-5 in Jeep Country back in 1954 and altered the course of off-road driving forever. 28 years later, CJ, "the original", remains a breed apart, as special as those who drive it.

The classic design is basically unchanged but CJ just keeps getting better, tougher, more ef-

ficient* and versatile. Also more beautiful, as the stunning new Jeep CJ-7 Limited will testify. (eyes right!)

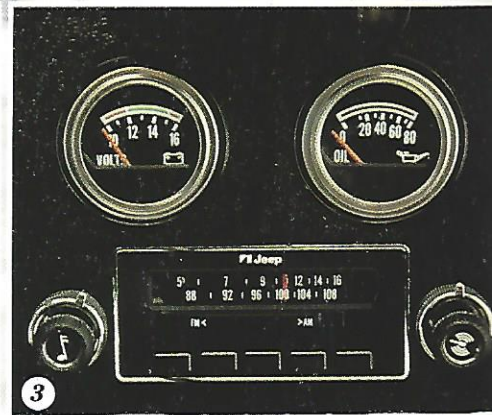
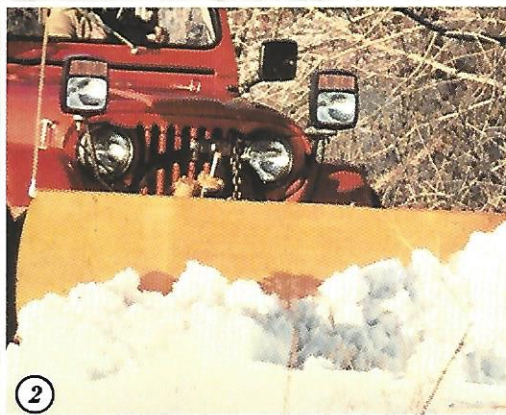
1. CJ-5 Renegade 2. CJ-7 Laredo

3. CJ-7 Base

*See EPA mileage estimates in the Technical Data section.







Jeep CJ

Jeep® is the first name throughout the world in four-wheel drive technology with over 40 years of design and engineering experience. CJ is prime testimony with a rugged and dependable part-time 4WD system that includes free wheeling front hubs and 2-speed Dana transfer case.

There's the personal-size CJ-5,

for maximum off road utility and versatility, or the longer wheel-base CJ-7 that sports a wider stance for '82. Both provide the standards off-roaders require, and are available with a wide range of performance, convenience and appearance options.

Over the following pages you'll find lots of reasons to own a CJ

including long-term quality, and the best fuel economy among domestic off road utility vehicles. But the best reason is that it's just plain fun to drive a legend!

CJ-5 Laredo (shown left) CJ-7 Renegade (shown below) 1. Ski Rack (acc) 2. Snow Plow (acc) 3. AM/FM Stereo Radio (opt) 4. Floor Mounted 5-speed (opt) 5. Sun Roof (opt) 6. Lockable Storage Area (opt)

*See EPA mileage estimates in the Technical Data section.



Jeep CJ

The base CJ is a pretty spectacular vehicle, as different from other 4WDs in appearance and function as night and day. Among the many standards are: roll bar, folding windshield, fuel tank and transfer case skid plates, new low-drag front disc brakes, solid state ignition, steering damper and front sway bar, wheelip extensions (CJ-7), 151 CID 4-cyl engine and a 4-speed manual transmission (new 5-speed, opt.)

Because CJ drivers are a breed apart, Jeep offers a variety of appearance and equipment option packages to help make CJs as personal and distinctive as their owners.

CJ-5, CJ-7 Renegade

Renegade is the boldest and most familiar of all CJ appearance packages. It includes all of the base CJ equipment, plus: Special "Renegade" hood lettering and exterior graphics in gradations of yellow, blue or red depending on exterior color selection • 15" x 7" white styled steel wheels • L78 x 15" Goodyear Tracker P/G OWL tires • High back forward pivoting front bucket seats and rear bench seat trimmed in Blue, Black or Nutmeg denim-look vinyl • Wheelip extensions (CJ-5) • Decor Group: rocker panel protection molding, sports steering wheel, front frame cover, instrument panel overlay • Convenience Group: courtesy lights, 8" day/night mirror, under hood light • Spare wheel lock • Available with all regular production exterior colors.

CJ-5, CJ-7 Laredo

This package offers brilliant distinction for CJ-5 with soft-top and CJ-7 with soft- or hard-top. The "Laredo" pkg. includes all of the base CJ equipment plus: Special "Laredo" hood lettering and stripe package in combinations of Silver and Gray or Nutmeg and Bronze with selected exterior colors • Beltline and door inset double pin stripe (hardtop) • Chrome plated 15" x 7" styled steel wheels (w/clear urethane

top coat) • Die cast chrome plated hub covers • P235/75R15 Wrangler OWL radial tires • Additional chrome trim: front bumper, rear bumperettes, grille panel (w/pin stripe), Mirror heads & footman loops • Gray or Bronze tone tinted quarter windows (CJ-7 hardtop) • Special forward pivoting high back bucket seats and rear bench seat in Black Cara vinyl with Light Gray accent strap or Nutmeg with Honey accent strap • Black leather-wrapped steering wheel & passenger assist bar • Instrument panel in Black or Nutmeg with special pin stripe • Black or Nutmeg indoor/outdoor carpeting • Special console and door trim panels • "Laredo" nameplate on instrument panel • Convenience Group (See Renegade Pkg.) • Tachometer & clock • Black rocker moldings • Wheelip extensions (CJ-5) • Hood insulation • Heavy duty shocks • Front frame cover • Spare wheel lock

New CJ-7 Limited

This newest and most refined CJ-7 trim package will set well with that special breed of drivers who want to blend an upgraded level of comfort and decor with their sports action on road or off. The tastefully understated Limited pkg includes all base CJ-7 equipment plus: Power steering and brakes • AM/FM radio (2 speakers) • Monochromatic paint theme with color-keyed hardtop and wheelip extensions • Special dual-color body side striping • Special grille panel stripe • Special exterior "Limited" nameplates • Chrome front bumper and rear bumperettes • Body side steps • Black painted windshield and window frames • Special LH & RH exterior mirrors • 15" x 7" color-keyed steel spoke wheels w/bright trim rings • P235/75R15 Goodyear Arriva all-weather radials • Polyspare on std. 6" wheel with vinyl cover matching exterior color • Special improved ride pkg. • Decor & Convenience Groups (See Renegade Pkg.) • Special

high back bucket seats and rear bench seat in Slate Blue or Nutmeg Western Weave cloth (Nutmeg leather seats also avail). • Special sound/heat insulated carpeted floors; wheelhousing; tailgate, innerbody side and cowl side trim panels • Carpeted protective front floor mats • Low gloss finish sports console, instrument panel, steering column and bezel and air conditioning housing • Color-keyed padded roll bar • Special door trim • Special headlining • Door actuated dome and courtesy lights • Leather-wrapped steering wheel and passenger assist handle • Rear quarter beltline trim molding • Exterior color availability: Mist Silver Metallic, Slate Blue Metallic and Olympic White w/Slate Blue cloth interior; Copper Brown Metallic, or Olympic White w/Nutmeg cloth or available leather interior.

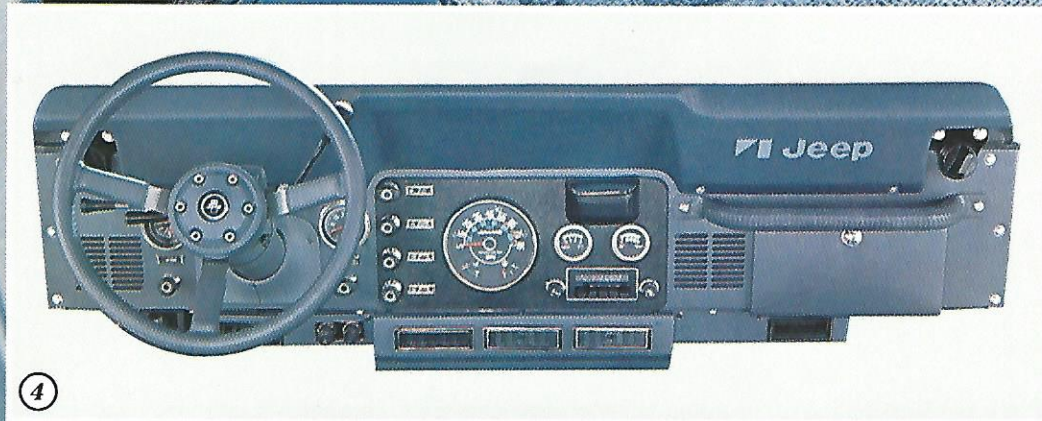
Interiors. The base CJ features handsome bucket seats covered neatly in Beige or Black linen-grain vinyl. High back bucket seats and matching rear bench seat are included in the "Renegade", "Laredo" and "Limited" packages. Denim trim is available as a separate option. See individual package descriptions for interior specifics.

Tops. For 1982 CJ-5 and CJ-7 are available with a full soft top and soft doors. Black or White vinyl; or Blue or Nutmeg denim-look vinyl. Additionally, CJ-7 can be fitted with optional soft top and steel doors or a hard top with steel doors. A full metal cab that includes tailgate is optional for CJ-5.

CJ-7 Limited Interior (Shown Right)

1. 151 CID, 4-Cylinder Engine (std) 2. Rear Swing-Away Spare Tire Carrier and Tailgate (std) 3. Fold Down Windshield (std) 4. Limited Instrument Panel (several options shown) 5. Laredo Highback Bucket Interior







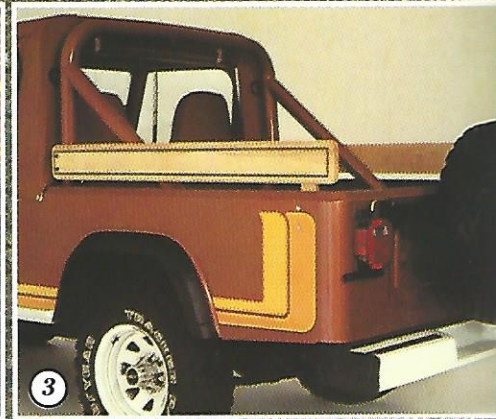
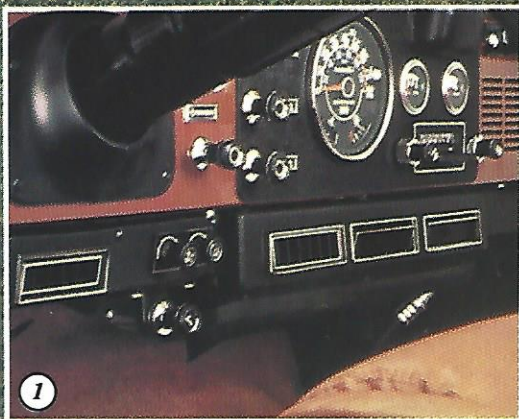
Jeep[®] Scrambler...America's import pickup fighter.

It's America's first small 4x4 pickup, yet it's not a bit like any other small pickup. Because Scrambler is made by Jeep Corporation (Who in the world knows

more about 4WD?), which is your assurance that it's tough, rugged and reliable.

*Scrambler SR Sport (Feature Vehicle)
1. Scrambler SL Sport 2. Scrambler Base*





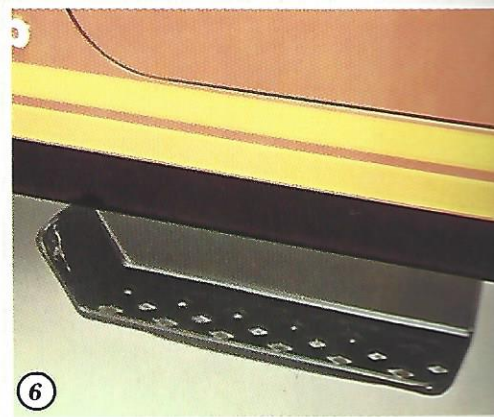
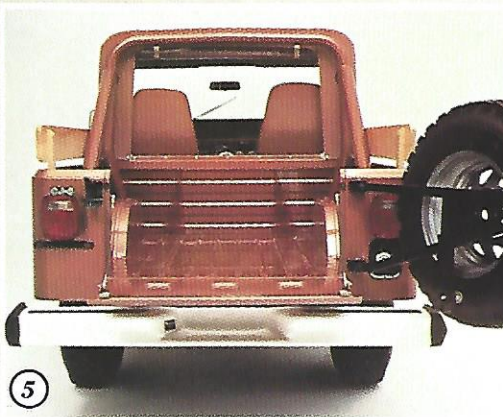
Jeep Scrambler

Scrambler is also the newest look in four-wheeling. It comes open body, soft half-cab and soft doors, soft half-cab and steel doors or hard half-cab and steel doors. In back there's a generous, deep, 5-foot pickup box to transport up to the maximum 1500 lb. payload capacity.

Under the hood, its 151 CID 4-cylinder engine, 4-speed manual transmission has helped Scrambler and Jeep CJ, become the mileage champs* of home-grown off-road utility vehicles in 1981. Jeep Scrambler...it's the fun loving, sun loving, cargo toting 4WD charmer from Jeep®.

Scrambler SL Sport (shown left) Scrambler SR Sport (shown right) 1. Air Conditioning (opt) 2. Fog Lamps (opt) 3. Wood Side Rail (opt) 4. Five Foot Cargo Box (std) 5. Rear Swing-Away Spare Tire (opt) 6. Side Step (opt)

*See EPA mileage estimates in Technical Data section



Jeep Scrambler

Scrambler is a remarkably complete small pickup ready for action in Jeep Country with standard part-time four-wheel drive that includes a 2-speed Dana transfer case and free-wheeling front hubs. Other tough off-road features include fuel tank and transfer case skid plate, fold-down windshield, electronic ignition, hefty 3" roll bar, wheelip extensions, front stabilizer and steering damper, a drop down tailgate, with available swing-away rear spare carrier.

Jeep vehicles are famous for their smart, bright appearance option packages, and the new Scrambler is no exception.

Scrambler SR Sport

The SR Sport package adds a bold lively touch to the tough Scrambler image. It includes all of the base Scrambler equipment, plus: Special "Scrambler" hood lettering and exterior graphics in gradations of yellow, blue or red depending of exterior color selection • 15" x 7" white styled steel wheels • L78 x 15 Goodyear Tracker P/G OWL tires • High back forward pivoting bucket seats trimmed in Blue, Black or Nutmeg denim-look vinyl • Decor Group: rocker panel protection molding, sports steering wheel, front frame cover, instrument panel overlay • Convenience Group: 8" day/night mirror, under hood light, courtesy lights • Spare wheel lock • Available with all regular production exterior colors.

Scrambler SL Sport

Scrambler SL Sport is perhaps the most distinctive small pickup available in the world with all of the base Scrambler equipment plus: Half-cab hardtop or soft-top • Special "Scrambler" hood lettering in Silver & Gray or Nutmeg & Bronze with selected exterior colors • Beltline and door inset double pin stripe • Chrome plated 15" x 7" styled steel wheels (w/clear urethane top coat) • Die cast chrome plated hub covers • P235/

75R15 Wrangler OWL radial tires •

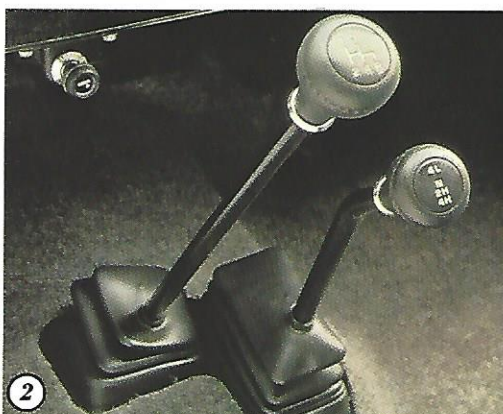
Additional chrome trim:

front bumper, rear step bumper, grille panel (w/pin stripe), mirror heads & arms, footman loops • Special high back forward pivoting bucket seats in Black Cara vinyl with Light Gray accent strap or Nutmeg with Honey accent strap • Black leather-wrapped steering wheel and passenger assist bar • Instrument panel in Black or Nutmeg with special pin stripe • Black or Nutmeg indoor/outdoor carpeting • Special console and door trim panels • Convenience Group (see SR Sport Pkg.) • Tachometer & clock • Black rocker moldings • Hood insulation • Heavy duty shocks • Front frame cover • Spare wheel lock.

Interiors. The base Scrambler bucket seats are neatly tailored in Black or Beige linen-grain vinyl. High back bucket seats are included in the Scrambler "SR Sport" and "SL Sport" packages. Denim Trim is available as a separate option. See individual package descriptions for interior specifics.

Tops. Scrambler offers the newest look in four wheeling no matter how you look at it. Open body is standard. Soft half cab and soft doors, soft half cab and steel doors, or hard half cab and steel doors are optional.

SR Sport Highback Bucket Interior (shown right) 1. Free-Wheeling Front Hubs (std) 2. Part-Time 4WD Transfer Case 4-speed Transmission (std) 3. Roll Bar (std) 4. Instrument Panel (several options shown) 5. Convenience Soft Top Storage Area (std)





Jeep Pickup...the professional's truck.

If you did a survey of the building trades, or off-road race drivers, or road maintenance yards you'd find that a lot of savvy professionals choose the rugged 4WD Jeep Pickup. There are solid reasons:

Jeep Pickup is the one that's exclusively four-wheel drive.

Jeep Pickup offers the highest payload capacity in its class.

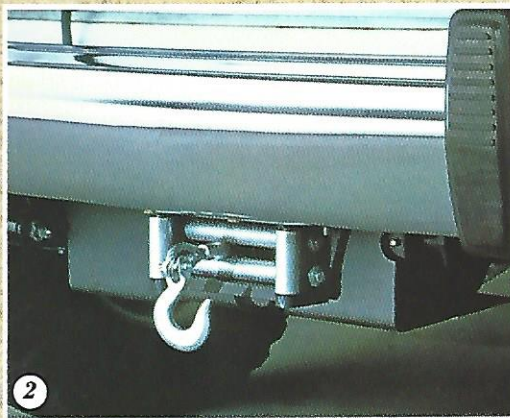
Jeep Pickup has high ground clearance but low loading height.

And best of all, Jeep Pickup offers light duty J-10 models and heavier duty J-20 with up to 8400 lbs. GVW, for whatever the task.

J-10 Custom with two tone paint (Feature Vehicle) 1. J-10 Honcho Sportside 2. J-10 Laredo 3. J-10 Pioneer (Pickup box cap option) 4. J-20 Custom







Jeep Pickup

Jeep Pickup's enviable reputation for superior 4WD performance and rugged dependability has been well documented in more than 40 years experience in building solid, tough off-road vehicles. Over the last 10 years, for example, 95.6% of all Jeep vehicles built are still on the job.+

Are you starting to see why Jeep Pickup is the choice of many hard-to-please professional workmen?

Check Jeep Pickup out before you make any other choice—2WD or 4WD. The tough-built 1982 Jeep Pickup is loaded with features that provide solid performance,

practical value and surprising economy.*

*J-10 Honcho and J-10 Base (Shown Left)
J-10 Pioneer (Shown Below) 1. Brush Guard and Fog Lights (opt) 2. Hidden Winch (acc) 3. Snow Plow (opt/acc) 4. Roll Bar (opt) 5. Chrome Rear Step Bumper (opt) 6. Sliding Rear Window/Cargo Box Light (opt)* *See EPA mileage estimates in the Technical Data section. +Based on the latest R.L. Polk Domestic registration figures.



Jeep Pickup

A lot of great adjectives accurately describe Jeep Pickup "tough," "rugged" "dependable," "workhorse." Another good one is "versatile" because Jeep Pickup offers so many ways to work and play: It comes in 119" or 131" wheelbase; with a 7' or 8' double steel wall cargo box; offers up to 8400 lbs. GVW; and it's available in sleek Townside or smart Sportside styling. The four-wheel drive system is famous Jeep Part-Time with standard free-wheeling front hubs. Standard powerteam includes a 258 CID Six equipped with electronic fuel and spark controls wedged to a fully-synchronized 4-speed manual transmission (5-speed or auto. avail.) Power steering and brakes are standard. So are hefty, load-cradling leaf springs, electronic ignition, fuel tank and transfer case skid plates, front stabilizer bar and steering damper. And Jeep goes far beyond the base pickup with the most outstanding lineup of Appearance & Equipment option packages offered on light trucks:

Custom Townside (J-10, J-20)

Rugged and ready Jeep Pickup with sleek Townside box, deluxe grain vinyl bench seat in Beige, Blue or Black • Upper bodyside molding, • Bright door and window moldings • Deluxe door trim panels • Instrument cluster trim • Hood insulation • Passenger assist handle

Custom Sportside (J-10)

Tough and sporty, the Custom Sportside J-10 offers everything in the Custom package above, plus: A unique Sportside Box • 15" x 8" white spoked styled wheels and 10-15 Tracker A/T Tires • Painted rear step bumper • Bright door frame moldings. • Vinyl bucket seats in Beige, Blue or Black • Carpeted cab floors

New Pioneer Townside (J-10, J-20)

Hi-Line appearance at an attractive price, that's what you'll appreciate about

the handsome new Pioneer package. It includes all the equipment in the Custom package plus: Upper bodyside scuff molding • Tailgate stripes • "Pioneer" decals • Dark argent painted grille • Carpeted cab floor • Western Weave cloth & vinyl bench seat • Matching door trim panels • Woodgrain inserts for armrests and instrument panel • Soft-Feel Sports Steering Wheel • Painted rear step bumper • Front bumper guards • Full wheel covers (J-10) • Extra quiet insulation • Light Group: Cargo area, courtesy, glove box, visor vanity and map lights

Honcho Sportside (J-10)

The sportiest offering in Jeep's popular Sportside classification is the bold "Honcho." Package includes everything in the Custom Pickup and Custom Sportside packages plus: Special decals on the box fenders in addition to basic "Honcho" striping • Roll bar • Wood box-side and front panel rails • Cara vinyl bucket seats in Beige, Blue or Black with fixed center armrest • Soft-Feel Steering Wheel

Honcho Townside (J-10) Short Wheelbase

The boldest trim package available on fullsize pickup. It includes all of the Custom Townside features plus: Three-color bodyside striping • Tailgate striping • "Honcho" decals • 15" x 8" white styled steel wheels and 10-15 Tracker A/T OWL tires • Painted rear step bumper • Western Weave cloth & vinyl bench seat in Beige, Blue or Black (Bucket seats w/ center armrest in Beige, Blue, Black or Nutmeg avail.) • Matching door trim panels • Carpeted cab floor • Soft-Feel Sports Steering Wheel

Laredo Townside (J-10)

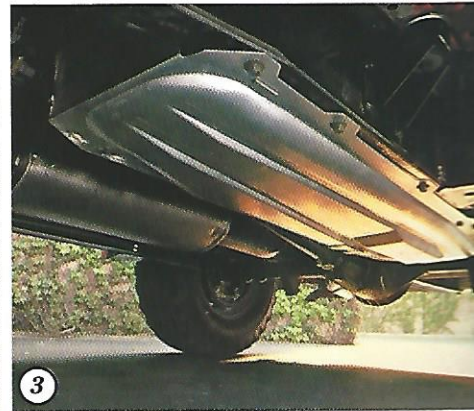
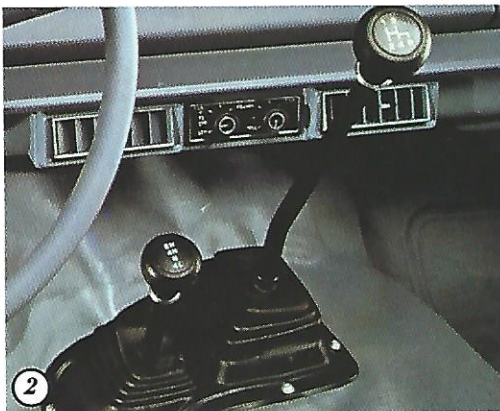
This is the premium line short wheelbase pickup from Jeep. A full-size, tough 4WD workhorse in every respect except in its graceful, distinctive, refined appearance

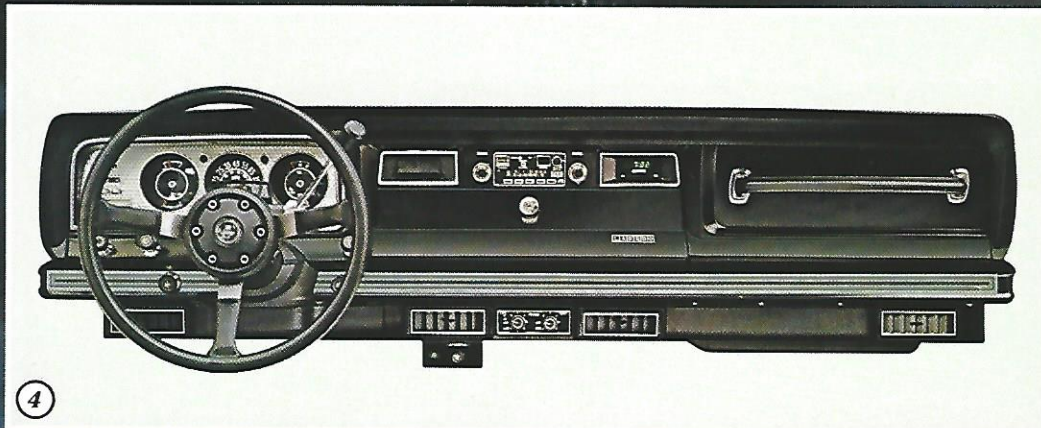
and interior comfort level. Laredo package includes all features in the Custom package plus: Special stripe package "Laredo" black and silver nameplates 15" x 8" chrome styled wheels, 10R Goodyear Wrangler radials and specially painted hubs • Chrome rear step bumper • Bright door frame moldings • Front bumper guards and nerf stripes • Special vinyl back bucket seats with center armrest trimmed in Black with Grey Accent straps or Nutmeg with Honey accent straps • Matching door trim panels with door pull straps • Special instrument panel striping, "Laredo" nameplate and cluster decoration. • Special color-key interior molding • Leather-wrapped steering wheel • Carpeted full cab floor (incl. behind seats) • Extra quiet insulation • Convenience Group: Underhood light, lights-on buzzer, digital clock • Light Group: Cargo area, courtesy, glove box, ashtray, visor vanity and map lights • Visibility Group: Right and left outside remote mirrors, intermittent wiper Halogen headlamps • Available in selected exterior colors*

Interiors. Do the professionals gravitate to the tough Jeep Pickup because it's a hard working truck, or because it's a quiet, roomy, comfortable place to spend the day? Hard to tell. The standard full-width bench seat is trimmed in handsome Cara Vinyl in Beige, Blue, or Black. See individual package descriptions for interior specifics.

Pioneer Western Weave Interior (shown right) 1. Free-Wheeling Front Hubs (std) 2. Part-Time 4WD Transfer Case/4-speed Transmission (std) 3. Fuel Tank Skid Plate (std) 4. Laredo Instrument Panel (several options shown) 5. Laredo Highback Interior

*See your Jeep Dealer for color selections.





Jeep Cherokee... For serious 4-wheelers.

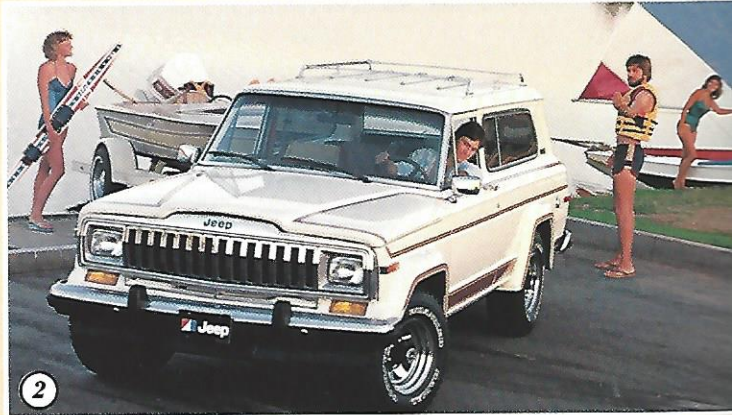
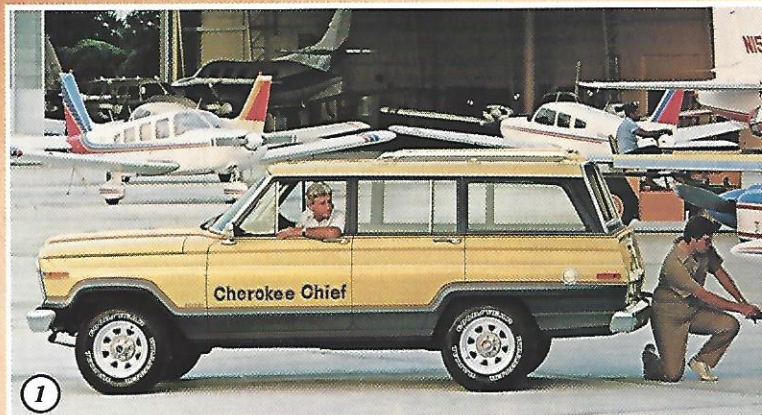
Tens of thousands of off-road enthusiasts who take their pastime seriously, take to Jeep Country in the magnificent Jeep Cherokee. It's first choice of so many because it offers so much.

Cherokee truly is a large sport/utility vehicle, with stretch-out room for five big people plus spacious storage behind the rear seat. It has exceptionally high ground clearance plus the best load and entry height of domestic 4x4 utility vehicles. It offers a solid, integral, full steel roof. The built-in (not added on) part-time 4WD system is Jeep tough, Jeep tested—the result of more than 40 years design and engineering experience. That ex-

perience pays off in proven durability. Over the last ten years, 95.6% of all Jeep vehicles built are still out working or playing.*

Chief 2-Door (Feature Vehicle) 1. Chief 4-Door 2. Laredo 2-Door 3. Base Wide-Wheel 2-Door 4. Base 2-Door

*Based on the latest R.L. Polk domestic registration figures.







Jeep Cherokee

Remembering that families can be serious about off-roading, too, only Jeep Cherokee offers the convenience of a 4-door model in either the Chief or Laredo, in addition to 2-door and Wide Wheel 2-door choices.

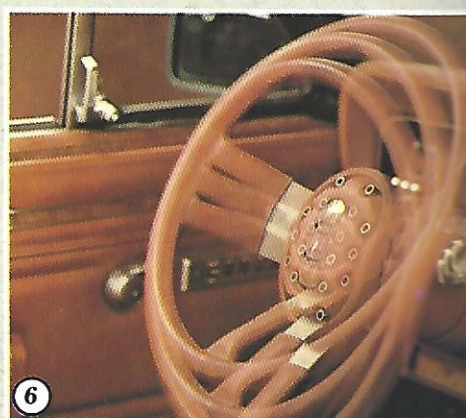
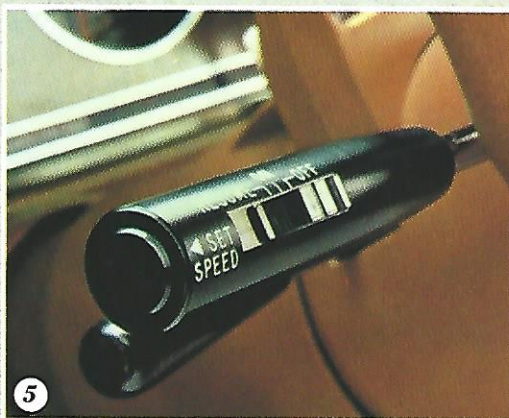
And, most importantly, Cherokee offers the welcome combination of utility, value and

fuel efficiency* so vital for the times.

No one else in the large sports/utility class puts it all together like Jeep Cherokee. Not Blazer or Bronco...not Charger or Duster. Find out for yourself. Tough test Jeep Cherokee. Make this the year you get serious about 4-wheeling.

Laredo 2-Door (shown left) Laredo 4-Door (shown below) 1. Part-Time 4WD Transmission (opt) 2. AM/FM Stereo Cassette (opt) 3. Power Windows and Door Locks (opt) 4. Rear Window Defroster and Power Tailgate (opt) 5. Cruise Control (opt) 6. Tilt Steering (opt)

*See EPA mileage estimates in the Technical Data section.



Jeep Cherokee

Jeep Cherokee comes equipped to make you feel at home—in the driveway or on the range! Famous Jeep Part-Time four-wheel drive teams with a standard 258 CID Six and 4-speed manual transmission (5-speed opt.) to provide solid, dependable performance wherever you roam. Impressive fuel economy, too. * Thanks to the electronic fuel and spark controlled 258 CID engine. Power steering and brakes, electronic ignition, front stabilizer and steering damper, fuel tank and transfer case skid plates are all standard. That's equipment off roaders insist on, you'll agree. If you want more, Cherokee can be very accommodating in either of two stunning Appearance & Equipment option packages.

Cherokee Chief

Like its illustrious kin, CJ, Cherokee Chief has become a legend itself among 4WD sport/utility fans. "Chief" is standard on the spacious 4-door Cherokee, and available on the sporty Wide Wheel 2-door. The package includes: Distinctive upper and lower body black-out treatment and special bodyside & tailgate striping (For the more discreet this may be deleted or replaced by vinyl upper bodyside molding) • Bright drip moldings • 15" x 7" white styled wheels and P235/75R15 Arriva BSW radials (4-door) • 15" x 8" white styled steel wheels and 10x15 Tracker A/T OWL tires (Wide-Wheel 2-door) • Blackout grille • Sun Valley vinyl front bucket seats and rear bench seat in Beige, Blue, Black or Nutmeg (smart, optional Western Weave fabric in Beige Blue, Black or Nutmeg with tri-tone accent straps) • Matching door and front quarter trim panels • Folding driver seat back (Wide-Wheel 2-door) • Soft-Feel Sports Steering Wheel • Color-keyed carpeting on floors and wheel housings • Instrument cluster overlay • Center armrest (front) • Passenger assist handle • Rear seat ashtrays • Equipment restrictions for certain colors. See your Jeep Dealer for specific color availability.

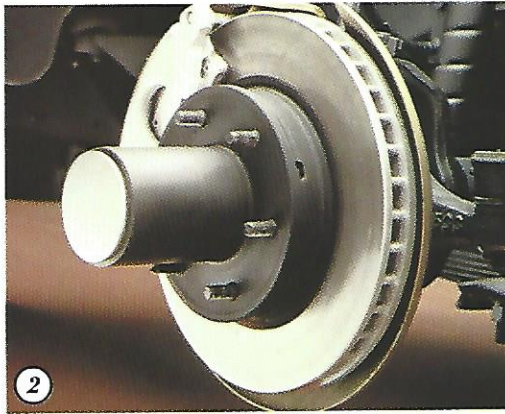
Cherokee Laredo

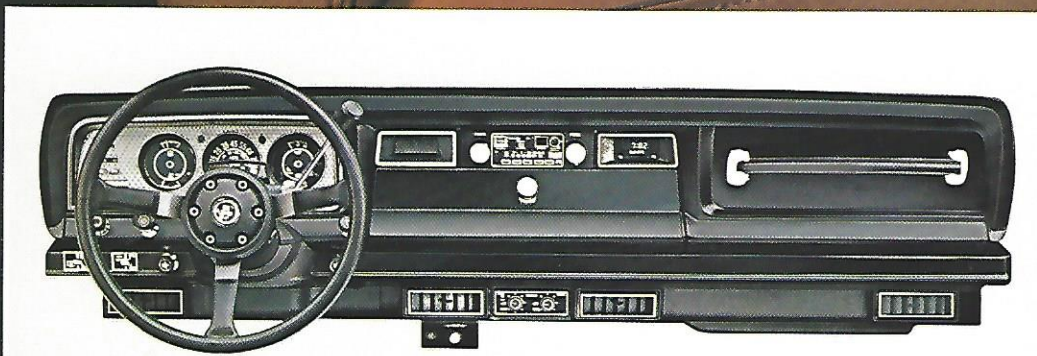
Laredo is Jeep's candidate for "best dressed" in the large sports/utility class. It's available on the Wide-Wheel 2-door or the 4-door Cherokee, and includes: Special Silver & Gray or Nutmeg & Bronze exterior striping • 15" x 8" chrome styled wheels with black hubs and 10R15 Good-year Wrangler radials (Wide-Wheel 2-door) • 15" x 7" argent styled wheels with bright trim rings & hubs and P235/75R15 Arriva BSW radials (4-door) • Black & Silver "Laredo" nameplates • Chrome grille insert • Flipper quarter windows w/Gray or Bronze-Tone glass, depending on interior (Wide-Wheel 2-door) • Bright roof drip and door frame molding • Luggage rack • Special folding driver and passenger front bucket seats w/center armrest and rear bench seat trimmed in choice of Cara Vinyl Black & Gray or Nutmeg & Lt. Nutmeg, or Western Weave Fabric in Black or Nutmeg with tri-tone accent straps • Black or Nutmeg carpeting on floors, wheel housings and side panels to beltline • Leather-wrapped steering wheel • Passenger assist handle and door mounted pull straps • Special door trim panels, instrument cluster overlay, instrument panel striping and "Laredo" nameplate • Rear seat ashtrays • Extra-quiet insulation • Convenience Group: Underhood light, lights-on buzzer, digital clock • Light Group: cargo area, courtesy, glove box, ashtray, visor vanity and map lights • Visibility Group: Right and left outside remote mirrors, intermittent wipers, Halogen headlamps • Available in 9 regular production exterior colors. See your Jeep Dealer for specific color availability.

*See EPA mileage estimates in Technical Data section.

Interiors. Inside Cherokee it is roomy, comfortable, quiet and very pleasant. On the 2-door and Wide-Wheel 2-door models everything is color-keyed or color coordinated to the front bucket seats and rear bench seat that are clad in Beige, Blue or Black easy-care Cara Vinyl with accent strap. The Cherokee Chief (Standard on 4-door and avail. on Wide-Wheel 2-door) has standard front bucket seats with a center armrest. They are tailored in smart Sun Valley vinyl featuring subtle gradations of Beige, Blue, Black or Nutmeg (Western Weave cloth optional). The Laredo package (optional on 2-door Wide-Wheel and 4-door models) offers front bucket seats with center armrest in Black or Nutmeg Western Weave Cloth, with tri-tone accents or Black & Gray or Nutmeg & Honey special vinyl.

Optional Western Weave Interior (Shown Right) 1. Power Mirror (opt) 2. Front Power Disc Brakes (std) 3. Folding and Removable Rear Seat (std) 4. Chief Instrument Panel (several options shown) 5. Laredo Interior





4

5



Jeep Wagoneer.... The ultimate wagon.

Wagoneer sounds like just what American families need...a full size wagon, lots of luxury, good mileage,* plus the traction, the stability, the all weather security of famous Jeep® 4-wheel drive

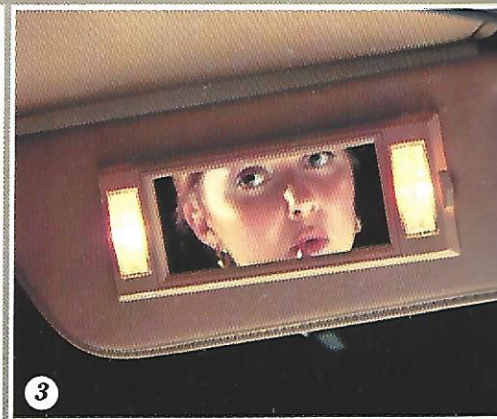
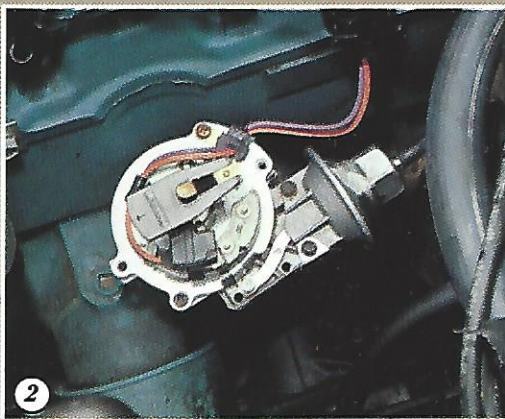
Those are the positive features that have made Wagoneer the carefully considered choice of thousands of families. But

Wagoneer is much more. It is a unique machine, in a class by itself, blending the virtues of a rugged, go anywhere, any-time road/off-road vehicle with the road comfort, convenience and elegance of full-size luxury cars or 2WD wagons.

Wagoneer Limited (Feature Vehicle) 1. Wagoneer Brougham 2. Wagoneer Custom

*See EPA mileage estimates in the Technical Data section.





Jeep Wagoneer

Wagoneer takes family travel to its highest plateau in elegance and practicality.

On the incomparable Wagoneer Limited, every convenience is standard including air conditioning, cruise control, power seats, windows and door locks... even electric remote outside mirrors. And with an expanded

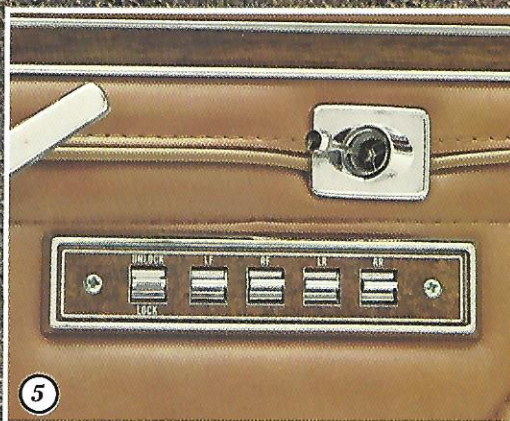
lineup the Ultimate Wagon is a surprisingly affordable alternative to conventional family wagons.

For today's Wagoneers are more efficient, more sensible for the times. The standard part-time 4WD system (Custom and Brougham), in combination with standard 4-speed manual transmission and electronic fuel and

spark controlled six cylinder engine, provide EPA estimates* comparable to full-size, gas engine 2WD wagons.

*Wagoneer Brougham (Shown Left)
Wagoneer Limited (Shown Below) 1. Cruise Control (opt) 2. Electronic Ignition (std) 3. Lighted Visor Vanity Mirror (opt) 4. Power Sun Roof (opt) 5. Power Windows and Door Locks (opt) 6. 6-way Power Seat (opt)*

*See EPA mileage estimates in Technical Data section



Jeep Wagoneer

Wagoneer is indeed the ultimate wagon. From the Custom, right on through the elegant Limited it is an exceptionally complete vehicle considerate of family comfort and security.

Custom Wagoneer

When other full-size wagons go into their list of options the Custom Wagoneer standard features are still going strong. In addition to the equipment mentioned on the preceding page, Custom Wagoneer features power steering and brakes • 15" x 7" P225/75R15 Goodyear Viva radials • Full wheel covers • Full width front and rear bench seat trimmed in Cara grain vinyl • Full carpeting in passenger and cargo areas • Protective cargo area mat • Color-keyed front and rear seat belts • Bodyside molding and bright window and tailgate trim • Chrome grille insert • Front stabilizer bar and steering damper • Fuel tank and transfer case skid plates • Electronic ignition • Available in all regular production exterior colors

Wagoneer Brougham

Brougham includes everything the Custom Wagoneer offers plus additional trim and convenience items that take it far beyond conventional 2WD offerings: Coventry Cloth (or Deluxe Grain vinyl) front and rear bench seats in Beige, Blue, Black or Nutmeg • Custom door trim panels • Woodgrain instrument cluster and steering wheel trim • Soft headliner • Power tailgate window • Extra quiet insulation • Argent painted/styled steel wheels with stainless steel trim rings • Bright door and quarter window frames • Bright lower tailgate molding • Woodgrain bodyside rub strip • Light Group: Cargo area, courtesy, glove box, ashtray, visor vanity and map lights • Convenience Group: Underhood light, lights-on buzzer, digital clock • Visibility Group: Right and left outside remote mirrors, intermittent wipers, Halogen headlamps • Available in all regular production exterior colors

Wagoneer Limited

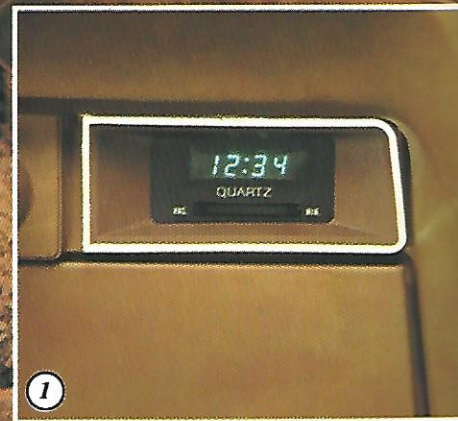
This is America's most completely equipped, elegantly appointed full-size 4WD wagon. In addition to the equipment described for the Custom Wagoneer, the incomparable Limited includes: Full bodyside and tailgate woodgrain treatment with vinyl surround moldings • Special luggage rack with woodgrain side rail inserts • Bright drip rails • "Limited" nameplates • 15" x 7" forged aluminum wheels • P225/75R15 Goodyear Arriva WSW steel radials • An available special two-tone paint treatment • Special interior trim including: Front bucket seats, rear bench seat trimmed in Beige or Nutmeg Leather: Matching leather

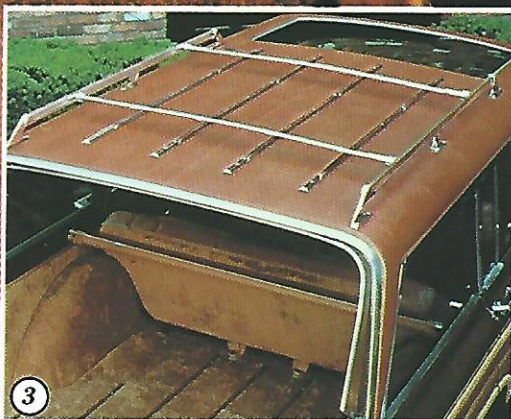
trimmed center armrest; door trim panels trimmed in Beige or Nutmeg Cara grained vinyl; Woodgrain trim on doors, steering wheel, lower instrument panel and armrests; Special carpeting in the passenger and load areas; Leather-wrapped steering wheel • Air conditioning • Tinted glass • Cruise Control • Tilt steering wheel • AM/FM stereo radio and Premium Audio System • Power windows and door locks • Power driver and front passenger seat • Power tailgate • Electric remote control outside mirrors • Retractable cargo area cover • Front and rear bumper guards and nerf strips • Convenience Group, Light Group, Visibility Group (see description in Brougham package) • Available in 10 regular production exterior colors. For specific color availability, including two-tone treatments, check with your Jeep Dealer.

Interiors. Wagoneer surrounds you with elegance and comfort. The Custom Wagoneer's full-width front and rear bench seats are covered in easy-to-clean and easy-on-the eyes Cara grain vinyl in Beige, Blue or Black, with color-keyed carpeting front, rear and in the cargo area. Wagoneer Brougham package offers front and rear bench seats covered in charming Coventry Check cloth in Beige, Blue, Black or Nutmeg. The incomparable Wagoneer Limited package provides front bucket seats with center armrest and a rear bench seat, are smartly tailored in Nutmeg or Beige leather with Caberfae inserts.

Limited Leather Interior (Shown Right)

1. Quartz Digital Clock (opt) 2. Ski Carrier (acc) 3. Vinyl Roof (opt) 4. Cargo Area With Rear Seat Removed (std)





Jeep

Standards, Options & Accessories

Standard Equipment:

- ☐ Air Cleaner—cellulose fiber
- ☐ Air Dam—front (Pickup, Cherokee, Wagoneer)
- ☐ Alternator—12-volt, 63 amp
- ☐ Armrest—front & rear (Cherokee, Wagoneer NA CJ, Scrambler); front (Pickup)
- ☐ Bumpers—bright anodized aluminum (NA CJ, Scrambler)
- ☐ Cigar lighter and Ashtray—front
- ☐ Electronic fuel and spark control (Pickup, Cherokee, Wagoneer)
- ☐ Engine coolant—permanent with hi-temp thermostat (50-50 mixture)
- ☐ Exhaust system—single
- ☐ Floor covering—color-keyed vinyl (Cherokee, Pickup NA CJ, Scrambler)
- ☐ Carpeting—Front, rear & cargo area (Wagoneer, Cherokee 4-dr.); mini carpet-front (CJ, Scrambler)
- ☐ Free-wheeling front hubs
- ☐ Front stabilizer bar and steering damper
- ☐ Fuel filters—tank, and in-line at fuel pump
- ☐ Gauges—oil, voltameter temp. fuel
- ☐ Glovebox—lockable (NA CJ, Scrambler)
- ☐ Heater & defroster
- ☐ Electronic Ignition
- ☐ Hood release—inside (NA CJ, Scrambler)
- ☐ Lights—head, stop, parking, backup, tail, directional (w/lane change detent), hazard warning
- ☐ Mirrors—inside, 12" day/night; outside, driver rearview (8" conventional inside mirror on CJ, & Scrambler)
- ☐ Moldings—bright vent window, windshield, tailgate (NA CJ, Scrambler)
- ☐ Padded instrument panel
- ☐ Padded sun visors
- ☐ Power front disc brakes (Cherokee, Wagoneer, Pickup)
- ☐ Power steering (variable ratio) (Cherokee, Wagoneer, Pickup)
- ☐ Seats—front buckets, rear bench (Cherokee); front & rear bench (Wagoneer); front bench (Pickup); front buckets (CJ-5/7, Scrambler)
- ☐ Skidplates—fuel tank, transfer case
- ☐ Steering column—energy absorbing with anti-theft ignition, steering and transmission lock
- ☐ Stone protection—rear fender (2-dr. Wide-Wheel Cherokee, Pickup)
- ☐ Tires & Wheels—(See individual models on specifications pages)
- ☐ Washers—electric and 2-speed electric wipers

Options:

Comfort & Convenience

- ☐ Denim Trim High back bucket seats (CJ, Scrambler only)
- ☐ Air conditioning
- ☐ Tinted glass (NA CJ, Scrambler)
- ☐ Tilt steering wheel
- ☐ Luggage rack (NA CJ, Scrambler, Pickup)
- ☐ Extra quiet insulation (NA CJ, Scrambler)
- ☐ Soft-Feel sports steering wheel
- ☐ Leather-wrapped sports steering wheel

Appearance

- ☐ Appearance & Equipment pkgs. CJ—Renegade, Laredo, Limited Scrambler—SR Sport, SL Sport Cherokee—Chief, Laredo Pickup—Custom, Sportside, Pioneer, Honcho, Honcho Sportside, Laredo Wagoneer—Brougham, Limited
- ☐ Soft tops (CJ, Scrambler only)
- ☐ Hard tops (CJ, Scrambler only)
- ☐ Wheel covers (Std. Wagoneer and Cherokee 2-dr. NA Wide-Wheel 2-dr. and 4-dr. Cherokee)
- ☐ Painted styled steel wheels (Std. Wide-Wheel 2-dr. Cherokee)
- ☐ Chrome styled steel wheels (CJ, Scrambler, Cherokee Wide-Wheel 2-dr. J-10 Pickups only)
- ☐ Forged aluminum wheels (NA CJ, Scrambler, Wide-Wheel 2-dr., J-20 Pickups)
- ☐ Retractable cargo area cover (Wagoneer, Cherokee only)
- ☐ Bumper guards (NA CJ, Scrambler)
- ☐ Rear step bumper (Scrambler, Pickup)
- ☐ Upper bodyside scuff molding (NA CJ, Scrambler, Wagoneer)
- ☐ Carpeting (Std. Wagoneer)

Audio

- ☐ AM radio w/antenna
- ☐ AM/FM stereo radio w/antenna
- ☐ AM/FM Cassette radio (NA CJ, Scrambler)
- ☐ AM/FM CB Stereo
- ☐ Electronic tuned AM/FM Cassette stereo radio (NA CJ, Scrambler)
- ☐ Premium Audio System (NA CJ, Scrambler)

Functional

- ☐ Automatic Transmission-Wide Ratio Design (NA CJ-5)
- ☐ 20 gallon Fuel Tank (CJ, Scrambler)
- ☐ Cruise Control (NA CJ-5)

- ☐ Power steering (variable ratio) (Std. Cherokee, Wagoneer, Pickup)
- ☐ Power front disc brakes (Std. Cherokee, Wagoneer Pickup)
- ☐ Power windows and door locks (NA CJ, Scrambler, Cherokee 2-dr.)
- ☐ Power tailgate window (Wagoneer, Cherokee only)
- ☐ Power front bucket seats (Wagoneer, Cherokee, Pickup only)
- ☐ Power remote control outside rearview mirrors (Wagoneer, Cherokee, Pickup)
- ☐ Power sun roof (Wagoneer Limited, Cherokee Laredo)
- ☐ Rear Trac Loc Differential
- ☐ Quadra Trac full time automatic 4-wheel drive system (NA CJ, Scrambler)
- ☐ 5-speed transmission, manual overdrive
- ☐ 360 CID V-8 engine (NA CJ, Scrambler Std. J-20 Pickup)
- ☐ Quartz Halogen headlamps
- ☐ Fog lamps with clear lens
- ☐ Heavy duty shocks (NA CJ, Scrambler)
- ☐ Dual front shocks (NA CJ, Scrambler)
- ☐ Soft-Ride suspension (Wagoneer, Cherokee 2-dr. and 4-dr. only)
- ☐ Heavy duty battery and alternator
- ☐ Cold Climate Group: includes HD battery, HD alternator and engine block heater
- ☐ Convenience Group: Includes underhood light, lights-on buzzer, digital clock
- ☐ Light Group: Includes cargo, ashtray, glove box courtesy, visor vanity and map lights
- ☐ Visibility Group: Includes right and left remote mirrors, intermittent wipers and Halogen headlamps
- ☐ Trailer towing information. (See chart)
- ☐ Accessories: Ask your Jeep Dealer for a 1982 Jeep Accessories Catalog containing a complete listing of dealer installed factory approved accessories

1. Aluminum Wheels

2. Argent Painted/Styled Steel Wheels

3. Wrangler Tire

4. Rollbar Padding/Saddle Bags

5. CJ Sun Bonnet Top (Acc)

6. Electric Winch (Acc)

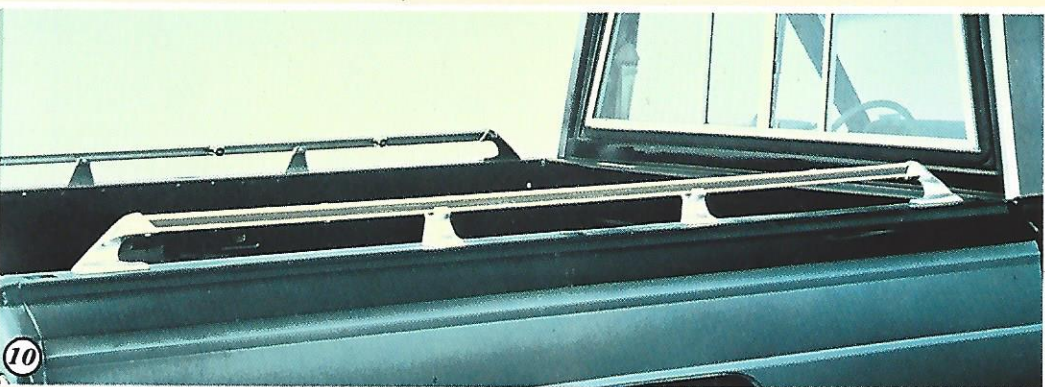
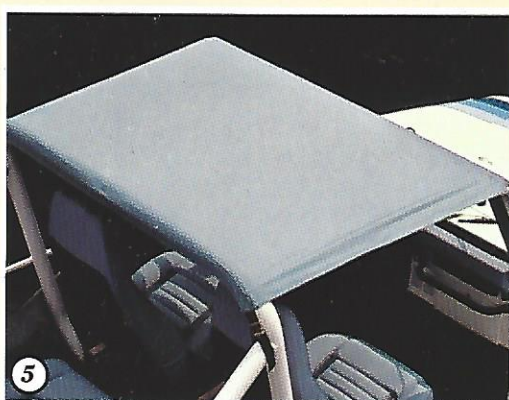
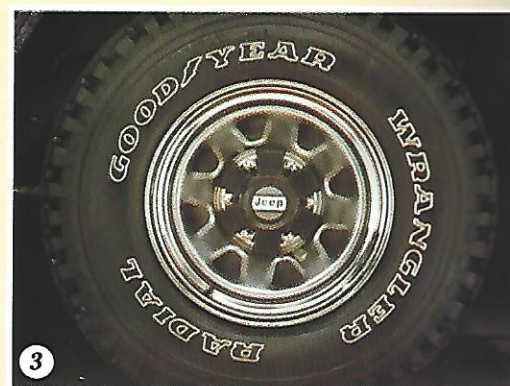
7. Air Conditioning

8. Radiator Screen and Brush Guard

9. Cargo Area Cover

10. Truck Rails (Acc)

NA—Not Available
STD—Standard Equipment
OPT—Factory Option
ACC—Dealer Installed Accessory



Jeep Store

GENUINE JEEP
PARTS AND
ACCESSORIES
ARE AVAILABLE
ONLY
FROM THE
JEEP STORE...
YOUR LOCAL
JEEP DEALER.

Technical Data

Dimensions:

(inches unless otherwise specified)

	CJ-5	CJ-7	SCRAMBLER	J-10 SHORT WB	J-10 LONG WB	J-20 LONG WB	J-10 SPORTSIDE	CHEROKEE 2-DR.	CHEROKEE 2-DR. WIDE WHEEL	CHEROKEE 4-DR.	WAGONEER
EXTERIOR											
LENGTH	144.3	153.2	177.2	194.0	206.0	206.0	194.0	186.4	186.4	186.4	186.4
WHEELBASE	83.4	93.4	103.4	118.8	130.8	130.8	118.8	108.7	108.7	108.7	108.7
OVERALL WIDTH	59.9	59.9	59.9	78.9	78.9	78.9	78.9	75.6	78.9	75.6	75.6
HEIGHT	69.1	69.1	69.2	68.5	68.3	70.7	69.1	66.1	66.8	66.1	65.9
TREAD, front	52.4	55.8	55.8	63.3	63.3	64.9	63.3	59.4	65.3	59.4	59.4
rear	50.5	55.1	55.1	63.8	63.8	65.9	63.8	57.8	62.3	57.8	57.8
OVERHANG, front	23.5	23.5	23.5	31.3	31.3	31.3	31.3	31.3	31.3	31.3	31.3
rear	37.4	36.3	50.3	43.9	43.9	43.9	43.9	46.4	46.4	46.4	46.4
MINIMUM GROUND CLEARANCE	7.6	7.6	7.6	7.7	7.7	8.1	8.6	7.7	8.6	7.7	7.7
TAILGATE OPENING WIDTH	34.5	34.5	34.5	57.2	57.2	57.2	48.6	54.9	54.9	54.9	54.9
TURNING DIAMETER, CURB TO CURB	33.5	35.9	37.6	40.6	44.5	44.5	41.2	37.7	39.4	37.7	37.7
INTERIOR											
HEAD ROOM, front	39.8	39.9 ⁽¹⁾	39.9 ⁽¹⁾	40.2	40.2	40.2	40.2	38.0	38.0	38.0	38.0
rear		39.6 ⁽¹⁾						37.2	37.2	37.2	37.2
LEG ROOM, front	37.9	39.1	39.1	41.6	41.6	41.6	41.6	41.6	41.6	41.6	41.6
rear	30.5	35.0						37.0	37.0	37.0	37.0
HIP ROOM, front	55.4	53.8	53.8	60.5	60.5	60.5	60.5	60.5	60.5	60.5	60.5
rear	36.0	36.0						60.9	60.9	60.9	60.9
SHOULDER ROOM, front	55.4	53.8	53.8	58.3	58.3	58.3	58.3	58.3	58.3	58.3	58.3
rear	55.4	56.3						58.3	58.3	58.3	58.3
CARGO VOLUME (cu. ft.)	10.2	13.6	30.4	67	76.6	76.6	38.9	95.1 ⁽²⁾	95.1 ⁽²⁾	95.1 ⁽²⁾	95.1 ⁽²⁾
CARGO BOX LENGTH (floor)			61.5	83.6	95.6	95.6	84.5				
CARGO BOX WIDTH			55.8	68.0	68.0	68.0	48.6				
CARGO BOX HEIGHT			16.4	20.5	20.5	20.5	15.6				

⁽¹⁾hardtop ⁽²⁾rear seat folded

Engine Availability

ENGINE	CJ	SCRAMBLER	CHEROKEE	WAGONEER	PICKUP J-10	PICKUP J-20
151 CID 4-cyl., 2-bbl. car., 8.2:1 comp. ratio, 4.00" x 3.00" bore and stroke	S	S	NA	NA	NA	NA
258 CID 6-cyl., 2-bbl. carb., 8.3:1 comp. ratio, 3.75" x 3.90" bore and stroke	A	A	S	S	S	NA
360 CID* V-8, 2-bbl. carb., 8.25:1 comp. ratio, 4.08" x 3.44" bore and stroke	NA	NA	A	A	A	S

*Not available in Calif.

S = Standard A = Available NA = Not Available

Mileage

1982 EPA ESTIMATES

	CJ	SCRAMBLER	PICKUP J-10	CHEROKEE	WAGONEER
151 CID-4					
EPA EST	23	23			
HWY	28	28			
258 CID-6					
EPA EST	18	18	18	18	18
HWY	27	27	25	25	25

Use these figures for comparison. Your results may differ due to driving speed, weather, or trip length. Actual highway mileage will be less. California figures may differ. CJ and Scrambler figure based on optional 5-speed transmission.

Specifications:

CJ-5/CJ-7 • Scrambler

Axle, front	Full floating open-end; GAWR: 2200 lbs.
Axle, rear	GAWR: 2700 lbs.
Brakes	Low drag manual front disc/rear drum (power assist optional)
Clutch, diameter	9.12 (4 cyl.) 10.5 (6 cyl.)
Clutch, area	71.78 (4 cyl.) 106.75 (6 cyl.)
Fuel tank capacity	15 (approx.) gallons (w/skid plate) std. 20 gallon (approx.) opt.
4WD system	Part-time, with lockable manual free-wheeling front hubs. Available with automatic transmission (CJ-7, Scrambler)
Transfer case	2-speed Part-Time with 2.62 low range gear reduction
Glass Area	768 sq. in. without top
Gross vehicle weight	3750 Lbs. (4150 lbs. Max.) CJ 4150 Lbs. Scrambler
Springs, front	4 leaf 170 lbs./in. rate std.
Springs rear	4 leaf 185 lbs./in. rate std. 5 leaf 185 lbs./in. rate std. (hardtop)
Steering	Recirculating ball standard with 24:1 low ratio; variable ratio power optional
Transmission	Fully synchronized 4-speed manual floor shift standard; column mounted automatic transmission with lock-up torque converter available on CJ-7 and Scrambler with Six. Automatic transmission available with 4-cylinder engine on CJ-7 and Scrambler. 5-speed floor-mounted manual trans. w/overdrive avail.
Tires	Five G78x15 black side wall suburbanite mud/snow tires (unbelted) standard (See tire options)
Wheels	Five 15x5-bolt, 5.5" circle standard; optional wheels include 15x7 spoked steel 5-bolt on a 5.5" circle

Pickup

Axle, front	Full floating open-end; GAWR: 3200 lbs. (J-10), 3500 lbs. (J-20).
rear	J-10: Semi floating, GAWR: 3200 lbs. J-20: Full floating, 6800 GVW: GAWR rating 3980 lbs.; 7600 GVW: GAWR rating 4700 lbs.; 8400 GVW: GAWR rating 5500 lbs.
Brakes	New low-drag power disc front (12" J-10; 12½" J-20) Rear drum (11" x 2" J-10; 12" x 2½" J-20)
Clutch, diameter	11" 111 sq. in.
Fuel tank capacity	18.2 (approx.) gallons (w/skid plate)
4WD system	Part-time with manual free-wheeling front hubs. Available with automatic transmission. Quadra-Trac available (req. automatic transmission)
Transfer case	2-speed Part-Time standard with 2.6 low range gear reduction
Glass Area	2883 sq. in.
Gross vehicle weight	6200 lbs. (J-10); 6800 lbs. (J-20); optional 7600 lbs. and 8400 lbs. (J-20)
Springs, front	5 leaf 215 lbs./in. rate std. (J-10) 7 leaf 260 lbs./in. rate std. (J-20)
Springs, rear	5 leaf 165 lbs./in. rate std. 119" WB J-10; 4 leaf 245 lbs./in. rate std. 131" WB J-10; 2 leaf tapered 340 lbs./rate std. J-20
Steering	Variable ratio power
Transmission	Fully synchronized 4-speed(2) manual floor shift standard; column mounted automatic transmission optional and 5-speed manual
Tires	Four H78-15 black side wall polyester Cruiser 78 (unbelted) std. J-10; Five 8.75-16.5 black side wall polyester Cushion Miler RV std. J-20; Temporary use polyspare (J-10) (2) J-20 4-speed has creeper first gear

Cherokee/Wagoneer

Axle, front	Full floating open-end GAWR: 3200 Lbs.
rear	GAWR: 3200 lbs.
Brakes	New low-drag power disc front (12" rotor); rear drum (11" x 2")
Fuel tank capacity	20.3 (approx.) gallons (w/skid plate)
4WD system	Part-time with manual free-wheeling front hubs (standard Custom Wagoneer and Cherokee), (Quadra-trac full-time automatic standard on Wagoneer Limited)
Glass Area	5142.5 sq. in. 4438 sq. in. (Cherokee 2-dr.)
Gross vehicle weight	6200 lbs.
Springs, front	6 leaf 210 lbs./in. rate std. (Wagoneer) 5 leaf 215 lbs./in. rate std. (Cherokee)
rear	5 leaf 165 lbs./in. rate std.
Steering	Variable ratio, power
Transmission	Fully synchronized 4-speed manual floor shift (standard on Custom Wagoneer and Cherokee), automatic (standard on Wagoneer Limited, optional Custom Wagoneer and Cherokee) 5-speed manual floor mounted transmission w/overdrive available (Part-time 4WD only)
Tires	P225/75R15 BSW Viva fiberglass radials (Custom Wagoneer and Cherokee), P225/75R15 WSW Arriva Steel radials (Wagoneer Limited). Temporary use polyspare. Suburban XG polyspare for wide wheel Cherokee
Wheels	15 x 6 six-bolt, 5.5" circle std. Cherokee. 15 x 8 six-bolt, 5.5" circle white painted spoke steel wheels std. Wide-wheel Cherokee 15 x 7 six-bolt 5.5" circle std. on Cherokee 4-dr. 15 x 7 six-bolt, 5.5" circle forged aluminum wheels std. Wagoneer Limited (optional on Custom Wagoneer)

4WD Systems

Jeep has been a world leader in four-wheel drive systems engineering for more than forty years. Over that period more than 4 million Jeep vehicles have established a reputation for toughness, performance and dependability over some of the most rugged terrain planet Earth can provide. The current generation of Jeep vehicles offers the advantages of a standard part-time four-wheel drive system manufactured from high-strength, light-weight componentry that doesn't sacrifice toughness. That's a big plus as many four wheelers spend much of their time—if not most—on pavement in two-wheel drive mode.

The part-time system that is standard on every Jeep vehicle for 1982 is truly impressive...a study in operational simplicity. On the highway you unlock the front hubs and shift the transfer case to 2WD mode. This disengages the front propeller shaft, differential and driving axles. Friction and noise are reduced and fuel economy is enhanced.*

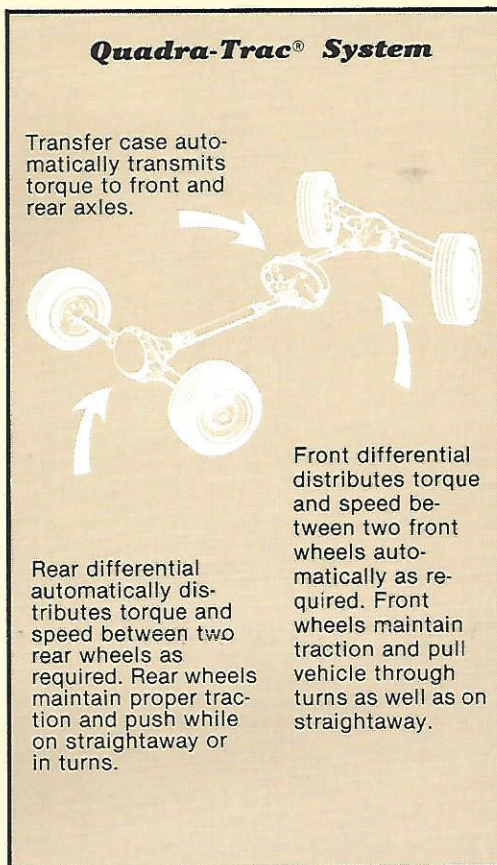
Off road, simply lock the front hubs, shift the transfer case to 4WD mode and you have the famous get-you-through regardless Jeep vehicle that has become the standard of the world for off-road performance.

Depending on the Jeep vehicle you select, the standard part-time 4WD system is teamed with a standard 4-speed manual transmission and standard 4-cylinder or 6-cylinder engine. A new 5-speed manual floor mounted transmission with overdrive is available for all Jeep models. And a wide-ratio automatic transmission is available for all but the Jeep CJ-5.

For 1982, Jeep again offers the convenience, the superb traction, the notably smooth dependable performance of Quadra-Trac full-time automatic 4WD, available on Jeep Cherokee, Wagoneer and Pickup models (it's standard on the elegant Wagoneer Limited). On highway, Quadra-Trac provides a sense of sure-footed security in all weather and on all road surfaces. Off-road it is a superb, predictable performer.

A specially designed controlled slip transfer case differential makes Quadra-Trac unique. The controlled slip differential automatically feeds torque to the axles with most traction in slippage situations, helping pull or push the vehicle out of trouble. It's an instantaneous process, continuously at work to provide control, traction and stability wherever you drive under any condition. And you have a choice of driving ranges: 4-Wheel High for normal operation, Low Lock for extra push/pull, and Hi-Lock

reserved for the most demanding conditions. With the viscous drive differential coupling the high-efficiency drive train operation is smooth and quiet. And, since the system is fully automatic, you never have to depart from those comfortable Jeep seats. Nice!



Tires

Viva Fiberglass belted tire. A strong all-around radial for highway and off road. P225/75R15 BSW. Std. Custom Wagoneer, 2-dr. Cherokee; avail. J-10 Pickup. P225/75R15 WSW. avail.

Cruiser Flexible polyester cord diagonal ply tires are strong, smartly styled and provide good traction. H78 x 15 BSW. Std. J-10 Pickups.

Suburbanite XG Polyglass sure-gripping tread design for off-road traction. L78 x 15 BSW. Std. 2-dr. Wide-Wheel Cherokee; avail. J-10 Pickups.

Suburbanite XG Fiberglass belted. An excellent Town & Country tire for smooth ride and positive traction. H78 x 15 BSW. Avail. all models except 2-dr. Wide-Wheel Cherokee and J-20 Pickup. G78 x 15 BSW. STD CJ-5/7, Scrambler. **Tiempo** Double steel belted radial with 10,000 biting edges to grip the road in any weather. P225/75R15 WSW. Avail. Wagoneer, 2-dr. Cherokee, J-10 Pickup. **F-32 Winter Radial** Made of Flex for remarkable adhesion when driving on slippery winter pavement. HR78 x 15 WSW. Avail. Wagoneer, 2-dr. Cherokee, J-10 Pickup.

Arriva Steel radial is a new American standard for radial tire performance. P225/75R15 WSW. Avail. Wagoneer, 2-dr. Cherokee; Std. Wagoneer Limited, CJ-5/7 Limited.

Wrangler Radial Bites deep in mud, sand, snow. Smooth and stable on the highway. 10R-15 OWL. Avail. 2-dr. Wide-Wheel Cherokee, J-10 Pickup. P235/75R15 OWL. Avail. CJ-5/7 Scrambler.

Tracker PG Rugged polyglass belted tire smooth on-highway and off. Solid 4WD performer. L78 x 15 OWL. Avail. CJ-5/7, Scrambler.

Tracker AT A wide all-terrain, all-weather tire designed for durability and rugged 4WD use. 10 x 15 OWL. Avail. Wide-Wheel Cherokee, J-10 Pickup.

Cushion Miler Made with Tufsyn, the strongest wearing rubber ever used. Goodyear truck tires. 8.75 x 16.5 BSW. Std. J-20 Pickups; 7.50 x 16.5 BSW. Avail. J-20 Pickups.

Custom Xtra Grip Features wide lugs for extra pulling power on snow and ice. 8.75 x 16.5 BSW. 7.50 x 16.5 BSW. Avail. J-20 Pickups.

Polyspare Temporary use spare that, without weight, provides good traction and smooth ride until basic tire is repaired or replaced. P225/75D15 BSW. Std. all models, except CJ and Scrambler with G or H78 x 15 tires. On CJ and Scrambler, Polyspare comes with vinyl cover to match color of top when ordered, or black when no top is ordered. NOTE: Standard location of Polyspare is rear mounted on CJ and roll bar side mounted (in box) on Scrambler (A spare tire matching the standard or available tires that come with your Jeep can be ordered. See your Jeep Dealer).

Trailer Towing

These charts are meant to serve as a quick-and-easy reference guide on how to properly equip your Jeep vehicle for all types of towing. For specific details, however, discuss your plans with your Jeep dealer. He will help you select the right equipment to meet your specifications.

CAUTION: Never overload your vehicle beyond these

design capacities. Jeep Corporation cannot be responsible for brake performance if the Jeep vehicle and trailer hydraulic brake systems are in any way connected. A separate brake system for all trailers weighing over 1,000 pounds gross is recommended. (State laws should be checked for trailer brake requirements.)

JEEP CJ-5, CJ-7, Scrambler	CLASS I
Maximum loaded trailer weight	2,000
Tongue load limit	200
REQUIRED EQUIPMENT	
Suspension	Extra-duty/sway bar
Hitch	Frame or drawbar
RECOMMENDED EQUIPMENT	
Engine	258 2-bbl. six

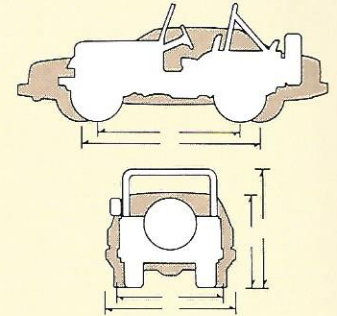
JEEP CHEROKEE, WAGONEER, PICKUP J-10	CLASS I	CLASS II	CLASS III
Maximum loaded trailer weight	2,000	3,500	5,000
Tongue load limit	200	350	750
TRAILER PACKAGES: (Wagoneer/Cherokee only)	MEDIUM DUTY		HEAVY DUTY
Hitch	Frame mounted, Step bumper (J-10)	Frame mounted, Step bumper (J-10)	**Equal. Hitch Receptacle
Wiring harness (trailer) *	5-wire	5-wire	**7-wire with relays
Heavy-duty flasher	yes	yes	no
Wiring harness (car to trailer)	5-wire	5-wire	7-wire
REQUIRED EQUIPMENT			
Engine			360 2-bbl. V-8
Axle ratio			3.31
Transmission			Automatic
Cooling			Heavy-duty
Battery			Heavy-duty 70-amp./hr.
Alternator			Heavy-duty 63-amp.
Auxiliary Transmission oil cooler			Required
Cargo carpet & insulation			Required
RECOMMENDED EQUIPMENT			
3.31:1 axle ratio	Recommended	Recommended	
V-8 engine	Recommended	Recommended	
Auxiliary Transmission oil cooler	Recommended	Recommended	
Automatic/Quadra-Trac	Recommended	Recommended	Recommended
Cooling		H.D. Recommended	
Cargo carpet & insulation	Recommended	Recommended	
Suspension Package, front, rear		Extra duty/ Air Shocks	Recommended Extra Duty Air Shocks

JEEP PICKUP J-20	CLASS I	CLASS II	CLASS III	CLASS IV	5TH WHEEL
Maximum loaded trailer	2000	3500	5000	7500	8000
Tongue load limit	200	350	750	1200	1850
Maximum total vehicle/trailer weight			13,000	13,000	13,000
REQUIRED EQUIPMENT					
Hitch	Frame or Rear Step Bumper	Frame or Rear Step Bumper	**Equalizing	**Equalizing	Cargo Bed Mounted**
Alternator			63 amp. Heavy Duty	63 amp. Heavy Duty	63 amp. Heavy Duty
Battery			70 amp./hr. Heavy Duty	70 amp./hr. Heavy Duty	70 amp./hr. Heavy Duty
RECOMMENDED EQUIPMENT					
Transmission	Automatic/	Automatic/	Automatic/	Automatic/	Automatic/
Transfer Case		Quadra-Trac	Quadra-Trac	Quadra-Trac	Quadra-Trac
Battery	Heavy Duty	Heavy Duty			
Alternator	Heavy Duty	Heavy Duty			
Cooling Transmission	Aux. Cooler	Aux. Oil Cooler	Aux. Oil Cooler	Aux. Oil Cooler	Aux. Oil Cooler

*Required body wiring harness used with power tailgate window and/or stereo radio.

**N/A as factory installed option.

A Word About Using Jeep Vehicles



Jeep is far and away the best known name in 4-wheeling. With more than 40 years experience in the design and engineering of four-wheel-drive systems, and more than 4 million Jeep vehicles produced, the reputation for toughness, dependability and longevity is well earned.

All Jeep models are multi-purpose 4-wheel drive vehicles with unique design characteristics that make them different than conventional two-wheel drive cars and light trucks. This is especially true of Jeep CJ-5, CJ-7 and Scrambler models with their high ground clearance, short overhang, narrow width and tight turning radius.

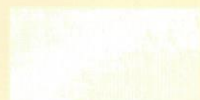
These design features provide unique handling abilities off-road. They also mean that Jeep CJ and Scrambler models will perform differently than conventional cars on-pavement. Owners and drivers of Jeep CJ or Scrambler vehicles should learn their capabilities and keep them in mind while driving, on-pavement or off.

Of course, off-road these unique design characteristics give Jeep CJ and Scrambler advantages in maneuverability, versatility and unmatched off-road performance that will allow you to go places you'd never dream of going in a car. In that light, you should always remember to respect the land and help protect the environment for future generations.

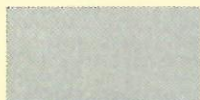
Jeep Corporation remains committed to the promotion of off-roading as a safe, positive, responsible recreational pursuit. And, as an advisory member of the United Four Wheel Drive Associations, we fully support organized four-wheeling.



Colors



Olympic
White



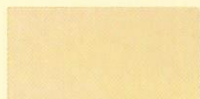
Mist Silver
Met.



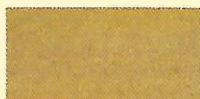
Classic
Black



Sherwood Green
Met.



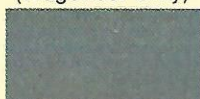
Jamaica
Beige



Topaz Gold
Met.
(Wagoneer Only)



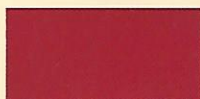
Copper
Brown Met.



Slate Blue
Met.



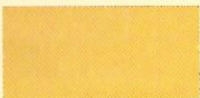
Deep Night
Blue



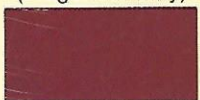
Oriental Red
(NA Wagoneer)



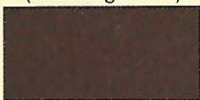
Deep Maroon
Met.
(Wagoneer only)



Sun Yellow
(NA Wagoneer)



Vintage Red
Met.



Chestnut Brown
Met.

1982 New Jeep Vehicle Limited Warranty

When an owner buys a new 1982 Jeep vehicle from an authorized Jeep vehicle dealer, Jeep Corporation* warrants that for 12-months or 12,000 miles (20,000 km) from the date of delivery or first use, whichever comes first, it will, except for tires, pay for the repair or replacement of any part it supplies which proves defective in material or workmanship under normal use and service. The authorized Jeep vehicle dealer will perform needed service adjustments during the first three months from that date.

Service adjustments and related maintenance are not covered by this warranty beyond the first three months of use. Service adjustments include, but are not limited to: wheel alignment and balancing, headlight alignment, adjustments to carburetor, distributor timing, clutch, brake, transmission linkage and bands, belts, doors, windows, hood, rear liftgate and tailgate. Related maintenance parts include, but are not limited to: shock absorbers, spark plugs, clutch and brake linings, automatic transmission bands, clutch plates, bulbs, wiper blades, belts and hoses.

All that is required is that the vehicle be properly maintained and cared for under normal use and service in the fifty United States and Canada and that warranty repairs or replacements be made by an authorized Jeep vehicle dealer.

No other express warranty is given or authorized by Jeep Corporation. Jeep Corporation disclaims any implied warranty of MERCHANTABILITY or FITNESS for any period of beyond the express warranty, and shall not be liable for loss of use of vehicle, loss of time, inconvenience, or other incidental or consequential damages.

Some states and provinces do not allow exclusion of incidental or consequential damages or limitation on how long an implied warranty lasts, so the above exclusion and limitation may not apply to buyers in some areas. This warranty gives the owners specific legal rights and the owner may also have other rights which vary from state to state or province to province.

1982 Jeep Extended Powertrain Protection Limited Warranty.

Upon expiration of the 1982 Jeep 12-Month/12,000-Mile New Vehicle Warranty, Jeep Corporation* further warrants to you, that, for an additional 12-months or 12,000-miles (20,000 km), whichever comes first, it will pay, except for the first \$100 per repair visit, for the repair or replacement of the following powertrain components which it supplies that prove defective in material or workmanship under normal use and service.

- Engine—Block, cylinder head, internal parts, manifolds, timing gears, timing chain, flywheel, damper pulley, valve cover, oil pan, cushions, water pump, seals and gaskets.
- Transmission—Case, internal parts, torque converter, cushions, seals and gaskets.
- Transfer Case—Case, internal parts, seals and gaskets.
- Front or Rear Wheel Drive—Differential housing, internal parts, propeller shafts, U-joints, bearings, seals and gaskets.

All we require is that the vehicle be properly maintained and cared for in the fifty United States and Canada and that warranty repairs or replacements be made by an authorized Jeep vehicle dealer.

Vehicles illustrated in this brochure may vary slightly from actual production models. Consult your Jeep Dealer for recent changes. This folder does not constitute an offer or commitment to sell. In order that product improvement may be made at any time, specifications and other data are subject to change without notice. Jeep vehicles incorporate thousands of different components produced by Jeep Corporation, affiliated companies and various independent suppliers. From time to time during the manufacturing process, it may be necessary to produce Jeep vehicles with different components or differently sourced components than initially scheduled. All components must meet the standards of Jeep Corporation and will provide the performance expected from Jeep vehicles. Jeep vehicles meet or exceed applicable Federal Motor Vehicle Safety Standards at the time of manufacture. Some of the Jeep vehicles shown are described in this brochure have optional equipment. JEEP, CJ®, CHEROKEE, CHEROKEE CHIEF, WAGONEER®, SCRAMBLER, RENEGADE®, LAREDO, PIONEER, QUADRA-TRAC®, JEEP STORE, and the Jeep CJ Radiator Grille Design are trademarks of Jeep Corporation*. In Canada, American Motors (Canada) Inc. is a licensed user.® Reg T

**Who knows more
about 4-wheel drive?**



**Jeep Corporation is a subsidiary
of American Motors Corporation**